



**EARLY RELEASE PACKAGE #2: HYDRONIC EQUIPMENT - ADDENDUM NO. 1  
SBAC GAINESVILLE HIGH SCHOOL BUILDING 27 HVAC RENOVATION  
GAINESVILLE, FLORIDA**

**January 11, 2019  
H2ENGINEERING PROJECT NO. 18-71**

This Addendum forms a part of the Contract Documents and modifies the original Early Release Package #2, dated **December 12, 2018** and revised **January 11, 2019**, as indicated below. This Addendum is in response to questions asked by prospective Bidders via email on January 1, 2019 and January 7, 2019. Bidders shall acknowledge receipt of this Addendum in the space provided on the Bid Form. Failure to do so may subject Bidder to Disqualification.

This Addendum consists of a one (1) page narrative, two (2) revised drawing sheet, and nine (9) added drawing sheets.

**DRAWINGS:**

**MECHANICAL DRAWINGS**

- |      |      |                                |
|------|------|--------------------------------|
| Item | 1-1  | <b>SHEET 1 of 11</b>           |
|      | A.   | Replace sheet in its entirety. |
| Item | 1-2  | <b>SHEET 2 of 11</b>           |
|      | A.   | Replace sheet in its entirety. |
| Item | 1-3  | <b>SHEET 3 of 11</b>           |
|      | A.   | Added sheet in its entirety.   |
| Item | 1-4  | <b>SHEET 4 of 11</b>           |
|      | A.   | Added sheet in its entirety.   |
| Item | 1-5  | <b>SHEET 5 of 11</b>           |
|      | A.   | Added sheet in its entirety.   |
| Item | 1-6  | <b>SHEET 6 of 11</b>           |
|      | A.   | Added sheet in its entirety.   |
| Item | 1-7  | <b>SHEET 7 of 11</b>           |
|      | A.   | Added sheet in its entirety.   |
| Item | 1-8  | <b>SHEET 8 of 11</b>           |
|      | A.   | Added sheet in its entirety.   |
| Item | 1-9  | <b>SHEET 9 of 11</b>           |
|      | A.   | Added sheet in its entirety.   |
| Item | 1-10 | <b>SHEET 10 of 11</b>          |
|      | A.   | Added sheet in its entirety.   |
| Item | 1-11 | <b>SHEET 11 of 11</b>          |
|      | A.   | Added sheet in its entirety.   |

**END OF ADDENDUM #1 FOR ERP #2**

## AIR COOLED CHILLER SCHEDULE

DESIGNATION	CH-1
REFRIGERATION CAPACITY NOMINAL (TONS)	100
REFRIGERATION CAPACITY REQUIRED (TONS)	102
ENT WATER TEMP (DEG F)	56
LVG WATER TEMP (DEG F)	44
EER/IPLV	10.5/17.0
AIR ENT CONDENSER (DEG F)	95
CHILLED WATER FLOW (GPM)	200
MAX WATER PRESSURE DROP (FT)	10
CHILLER FOULING FACTOR	0.0001
UNIT DATA	
NUMBER OF COMPRESSORS (#)	4
NUMBER OF FANS (#)	6
UNIT CAPACITY STEPS	4
COMPRESSOR STARTER TYPE	ACROSS THE LINE
REFRIGERANT TYPE	R-410A
ELECTRICAL DATA	
ELECTRICAL CHAR (V-PH)	208/3
UNIT MCA (A) - CIRCUIT 1	215
UNIT MOCP (A) - CIRCUIT 1	300
UNIT MCA (A) - CIRCUIT 2	248
UNIT MOCP (A) - CIRCUIT 2	300
MAX TOTAL INPUT POWER (KW)	118

NOTES (PROVIDE FOLLOWING OPTIONS):

- 1.) PROVIDE 120V/1 PHASE POWER CONNECTION FOR EVAPORATOR HEAT TAPE.
- 2.) PROVIDE MULTI-POINT POWER.

## CHILLED WATER AIR HANDLING UNIT SCHEDULE

DESIGNATION	AHU-1W	AHU-2W	AHU-5W
AIR HANDLING UNIT DATA			
TOTAL SUPPLY AIR (CFM)	2300	5000	3100
OUTSIDE AIR (CFM)	300	900	500
FILTER SECTION DATA			
DAMPERS	NONE	NONE	NONE
FILTER ORIENTATION	ANGLED	ANGLED	ANGLED
TYPE OF FILTER	2" PLEATED MERV 13	2" PLEATED MERV 13	2" PLEATED MERV 13
COOLING COIL DATA - MAX 120 FPF, 10 ROWS AND MAX FLUID PRESSURE DROP 10 FT			
TOTAL COOLING CAPACITY (MBTUH)	68.4	172.0	91.2
SENSIBLE COOLING CAPACITY (MBTUH)	59.7	130.0	80.2
AIR ENTERING COOLING COIL (DEB F DW/ DEG F WB)	75.9/62.4	75.8/63.8	75.8/62.2
AIR LEAVING COOLING COIL (DEB F DW/ DEG F WB)	52.0/51.8	52.0/51.8	52.0/51.8
AIR PRESSURE DROP ACROSS COIL (IN W.G.)	0.75	0.75	0.75
WATER FLOW (GPM)	8.6	22	12
CHILLED WATER ENTERING TEMPERATURE (DEG F)	44	44	44
CHILLED WATER LEAVING TEMPERATURE (DEG F)	60	60	60
MINIMUM FACE AREA (SF)	5	10	6.5
RUNOUT PIPE SIZE (IN)	1	2	1 1/4
FAN SECTION DATA			
FAN TYPE	PLENUM	PLENUM	PLENUM
DRIVE TYPE	DIRECT	DIRECT	DIRECT
FAN QUANTITY (#)	1	1	1
EXTERNAL STATIC PRESSURE (IN W.G.)	2.0	2.0	2.0
TOTAL STATIC PRESSURE (IN W.G.)	3.5	3.5	3.5
TOTAL FAN MOTOR HORSEPOWER (HP)	3	7.5	5
ELECTRICAL CHAR (V/PH)	208/3	208/3	208/3
VARIABLE SPEED DRIVE	YES	YES	YES

NOTES:

- 1.) CHILLED WATER AIR HANDLING UNIT COOLING COILS SELECTED BASED ON NO SUPPORT FROM OAU.

REPLACE SHEET IN ITS ENTIRETY

### REVISIONS:

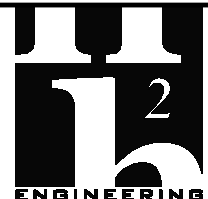
1/11/2019 ADDENDUM #1

**PROJECT:**  
SBAC GAINESVILLE HIGH SCHOOL  
BUILDING 27 HVAC RENOVATION

**DESCRIPTION:**  
EARLY RELEASE PACKAGE #2:  
HYDRONIC EQUIPMENT



**DATE:** 12-12-2018  
**SBAC #:** H1710  
**PAGE:** 1 OF 11



114 EAST 5th AVENUE  
TALLAHASSEE, FL 32303  
PHONE 850.224.7922  
www.H2Engineering.com

H2E PROJECT No. **1871**

THIS DOCUMENT IS THE PROPERTY OF H2Engineering AND IS PREPARED AS AN INSTRUMENT OF SERVICE. ITS USE, REUSE OR REPRODUCTION, EXCEPT BY WRITTEN AGREEMENT WITH H2ENGINEERING, INC., IS PROHIBITED.

Florida Certificate of Authorization #2485

## CHILLED WATER AIR HANDLING UNIT SCHEDULE

DESIGNATION	AHU-6W	AHU-1N	AHU-2N
AIR HANDLING UNIT DATA			
TOTAL SUPPLY AIR (CFM)	5000	4000	6000
OUTSIDE AIR (CFM)	1200	1100	1100
FILTER SECTION DATA			
DAMPERS	NONE	NONE	NONE
FILTER ORIENTATION	ANGLED	ANGLED	ANGLED
TYPE OF FILTER	2" PLEATED MERV 13	2" PLEATED MERV 13	2" PLEATED MERV 13
COOLING COIL DATA - MAX 120 FPF, 10 ROWS AND MAX FLUID PRESSURE DROP 10 FT			
TOTAL COOLING CAPACITY (MBTUH)	149.0	127.0	180.0
SENSIBLE COOLING CAPACITY (MBTUH)	129.0	103.0	155.0
AIR ENTERING COOLING COIL (DEB F DW/ DEG F WB)	75.8/62.4	75.7/63.0	75.8/62.5
AIR LEAVING COOLING COIL (DEB F DW/ DEG F WB)	52.0/51.8	52.0/51.8	52.0/51.8
AIR PRESSURE DROP ACROSS COIL (IN W.G.)	0.75	0.75	0.75
WATER FLOW (GPM)	19	16	23
CHILLED WATER ENTERING TEMPERATURE (DEG F)	44	44	44
CHILLED WATER LEAVING TEMPERATURE (DEG F)	60	60	60
MINIMUM FACE AREA (SF)	10.5	8.5	12.5
RUNOUT PIPE SIZE (IN)	1 1/2	1 1/2	2
FAN SECTION DATA			
FAN TYPE	PLENUM	PLENUM	PLENUM
DRIVE TYPE	DIRECT	DIRECT	DIRECT
FAN QUANTITY (#)	1	1	1
EXTERNAL STATIC PRESSURE (IN W.G.)	2.0	2.0	2.0
TOTAL STATIC PRESSURE (IN W.G.)	3.5	3.5	3.5
TOTAL FAN MOTOR HORSEPOWER (HP)	7.5	5	7.5
ELECTRICAL CHAR (V/PH)	208/3	208/3	208/3
VARIABLE SPEED DRIVE	YES	YES	YES

### NOTES:

1.) CHILLED WATER AIR HANDLING UNIT COOLING COILS SELECTED BASED ON NO SUPPORT FROM OAU.

## CHILLED WATER DEDICATED OUTSIDE AIR UNIT SCHEDULE

DESIGNATION	OAU-1N	OAU-1W	OAU-4W
AIR HANDLING UNIT DATA			
TOTAL SUPPLY AIR (CFM)	2200	1200	1700
OUTSIDE AIR (CFM)	2200	1200	1700
FILTER SECTION DATA			
DAMPERS	NONE	NONE	NONE
FILTER ORIENTATION	ANGLED	ANGLED	ANGLED
TYPE OF FILTER	2" PLEATED MERV 13	2" PLEATED MERV 13	2" PLEATED MERV 13
COOLING COIL DATA - MAX 120 FPF, 10 ROWS AND MAX FLUID PRESSURE DROP 10 FT			
TOTAL COOLING CAPACITY (MBTUH)	207.0	113.0	160.0
SENSIBLE COOLING CAPACITY (MBTUH)	88.6	48.4	68.5
AIR ENTERING COOLING COIL (DEB F DW/ DEG F WB)	88.0/79.0	88.0/79.0	88.0/79.0
AIR LEAVING COOLING COIL (DEB F DW/ DEG F WB)	52.0/51.8	52.0/51.8	52.0/51.8
MAX AIR PRESSURE DROP ACROSS COIL (IN W.G.)	0.75	0.75	0.75
WATER FLOW (GPM)	26	15	20
CHILLED WATER ENTERING TEMPERATURE (DEG F)	44	44	44
CHILLED WATER LEAVING TEMPERATURE (DEG F)	60	60	60
MINIMUM FACE AREA (SF)	5.5	3	4
RUNOUT PIPE SIZE (IN)	2	1 1/2	1 1/2
HEAT PIPE COIL DATA - MAX 120 FPF			
AIR ENTERING PRE-COOLING COIL (DEB F DW/ DEG F WB)	88.0/79.0	88.0/79.0	88.0/79.0
AIR LEAVING PRE-COOLING COIL (DEB F DW/ DEG F WB)	75.3/75.3	75.3/75.3	75.3/75.3
AIR ENTERING RE-HEAT COIL (DEB F DW/ DEG F WB)	52.0/51.8	52.0/51.8	52.0/51.8
AIR LEAVING RE-HEAT COIL (DEB F DW/ DEG F WB)	67.0/58.0	67.0/58.0	67.0/58.0
MAX AIR PRESSURE DROP AT COIL (IN W.G.)	0.35	0.35	0.35
FAN SECTION DATA			
FAN TYPE	PLENUM	PLENUM	PLENUM
DRIVE TYPE	DIRECT	DIRECT	DIRECT
FAN QUANTITY (#)	1	1	1
EXTERNAL STATIC PRESSURE (IN W.G.)	1.0	1.0	1.0
TOTAL STATIC PRESSURE (IN W.G.)	3.50	3.50	3.50
TOTAL FAN MOTOR HORSEPOWER (HP)	2	1 1/2	2
ELECTRICAL CHAR (V/PH)	208/3	208/3	208/3
VARIABLE SPEED DRIVE	YES	YES	YES

### NOTES:

1.) CHILLED WATER DEDICATED OUTSIDE AIR COOLING COILS SIZED BASED ON NO HEAT PIPE PRE-COOLING SUPPORT.

REPLACE SHEET IN ITS ENTIRETY

### REVISIONS:

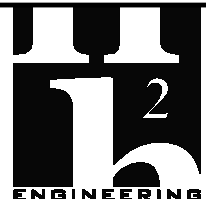
1 1/11/2019 ADDENDUM #1

**PROJECT:**  
SBAC GAINESVILLE HIGH SCHOOL  
BUILDING 27 HVAC RENOVATION

**DESCRIPTION:**  
EARLY RELEASE PACKAGE #2:  
HYDRONIC EQUIPMENT



**DATE:** 12-12-2018  
**SBAC #:** H1710  
**PAGE:** 2 OF 11

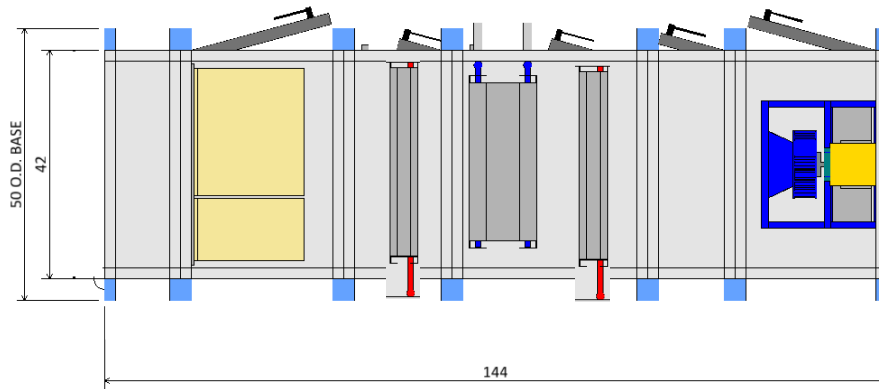


114 EAST 5th AVENUE  
TALLAHASSEE, FL 32303  
PHONE 850.224.7922  
www.H2Engineering.com

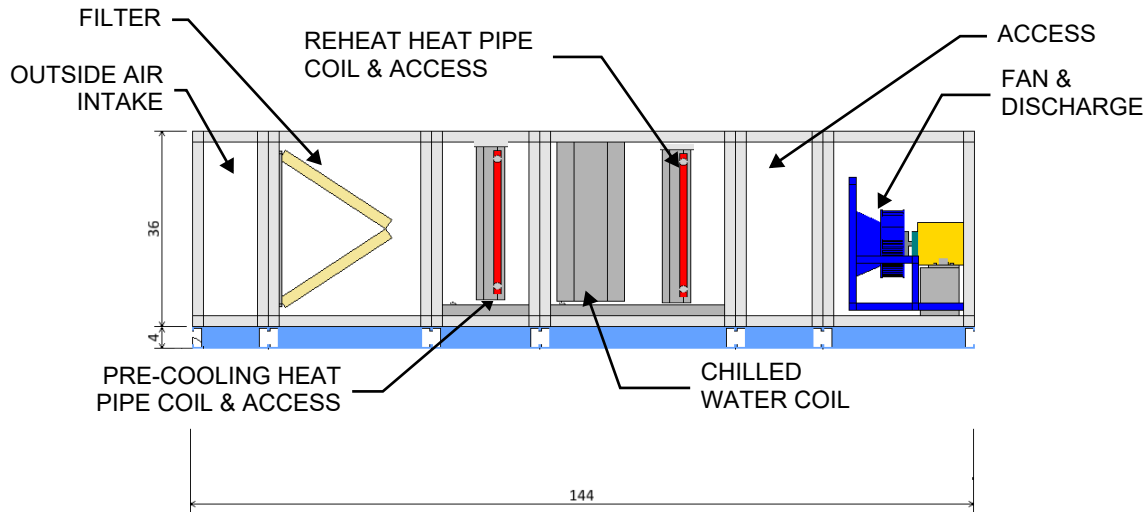
H2E PROJECT No. **1871**

THIS DOCUMENT IS THE PROPERTY OF H2Engineering AND IS PREPARED AS AN INSTRUMENT OF SERVICE. ITS USE, REUSE OR REPRODUCTION, EXCEPT BY WRITTEN AGREEMENT WITH H2ENGINEERING, INC., IS PROHIBITED.

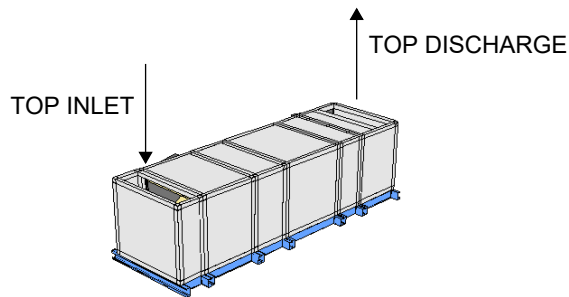
Florida Certificate of Authorization #2485



PLAN VIEW



ELEVATION VIEW



ISOMETRIC VIEW

ADDED SHEET IN ITS ENTIRETY

## REVISIONS:

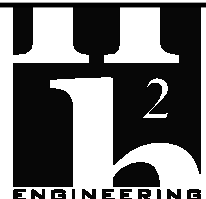
1/11/2019 ADDENDUM #1

**PROJECT:**  
SBAC GAINESVILLE HIGH SCHOOL  
BUILDING 27 HVAC RENOVATION

**DESCRIPTION:**  
EARLY RELEASE PACKAGE #2:  
HYDRONIC EQUIPMENT



**DATE:** 12-12-2018  
**SBAC #:** H1710  
**PAGE:** 3 OF 11



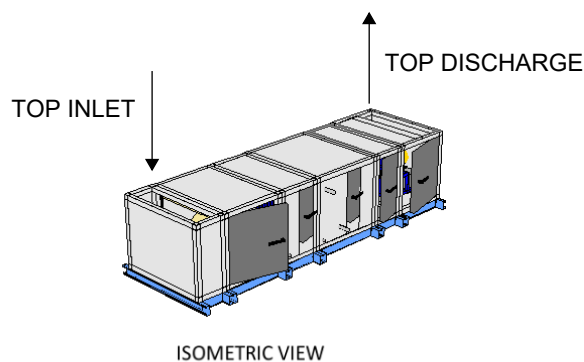
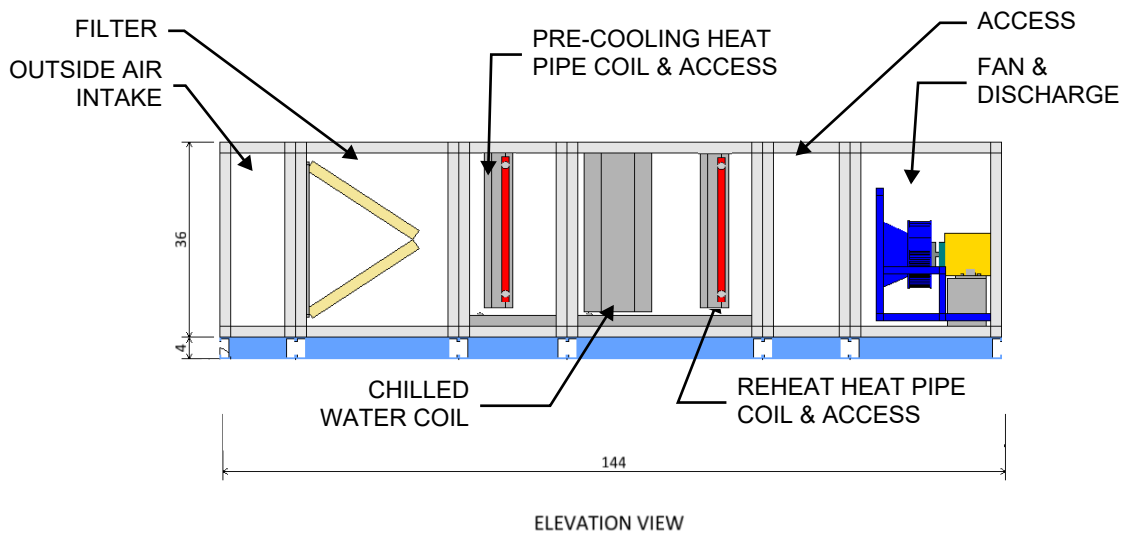
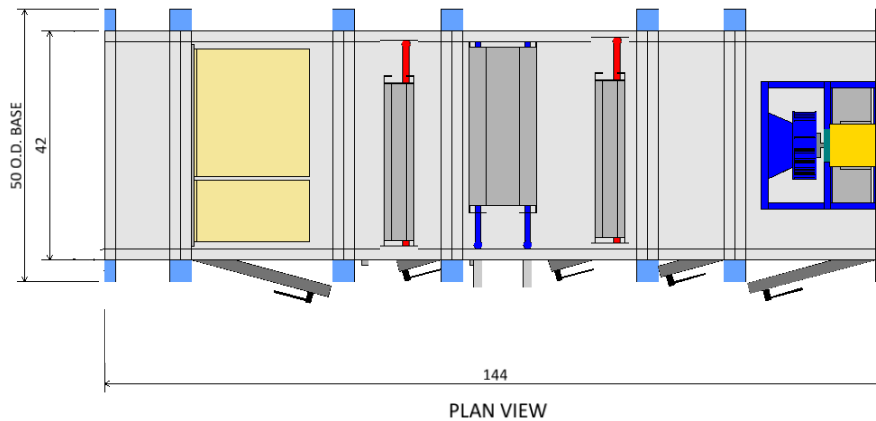
114 EAST 5th AVENUE  
TALLAHASSEE, FL 32303  
PHONE 850.224.7922  
www.H2Engineering.com

H2E PROJECT No. **1871**

THIS DOCUMENT IS THE PROPERTY OF H2Engineering AND IS PREPARED AS AN INSTRUMENT OF SERVICE. ITS USE, REUSE OR REPRODUCTION, EXCEPT BY WRITTEN AGREEMENT WITH H2ENGINEERING, INC., IS PROHIBITED.

Florida Certificate of Authorization #2485





ADDED SHEET IN ITS ENTIRETY

## REVISIONS:

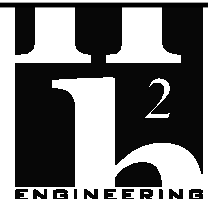
1/11/2019 ADDENDUM #1

**PROJECT:**  
SBAC GAINESVILLE HIGH SCHOOL  
BUILDING 27 HVAC RENOVATION

**DESCRIPTION:**  
EARLY RELEASE PACKAGE #2:  
HYDRONIC EQUIPMENT



**DATE:** 12-12-2018  
**SBAC #:** H1710  
**PAGE:** 5 OF 11

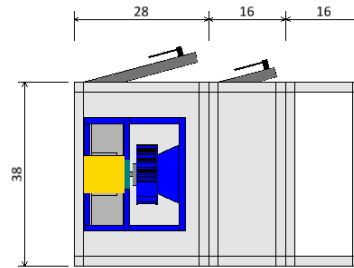


114 EAST 5th AVENUE  
TALLAHASSEE, FL 32303  
PHONE 850.224.7922  
www.H2Engineering.com

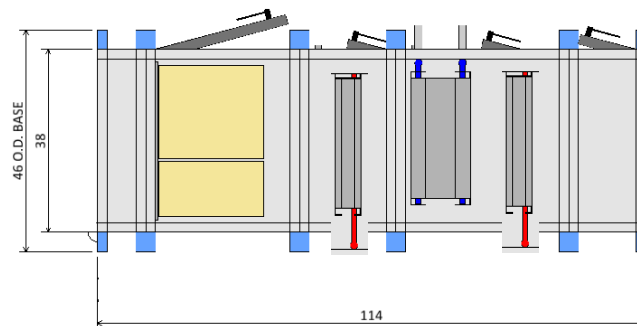
H2E PROJECT No. **1871**

THIS DOCUMENT IS THE PROPERTY OF  
H2Engineering AND IS PREPARED AS AN  
INSTRUMENT OF SERVICE. ITS USE, REUSE  
OR REPRODUCTION, EXCEPT BY WRITTEN  
AGREEMENT WITH H2ENGINEERING, INC., IS  
PROHIBITED.

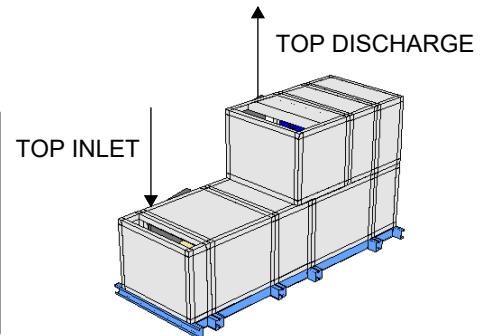
Florida Certificate of Authorization #2485



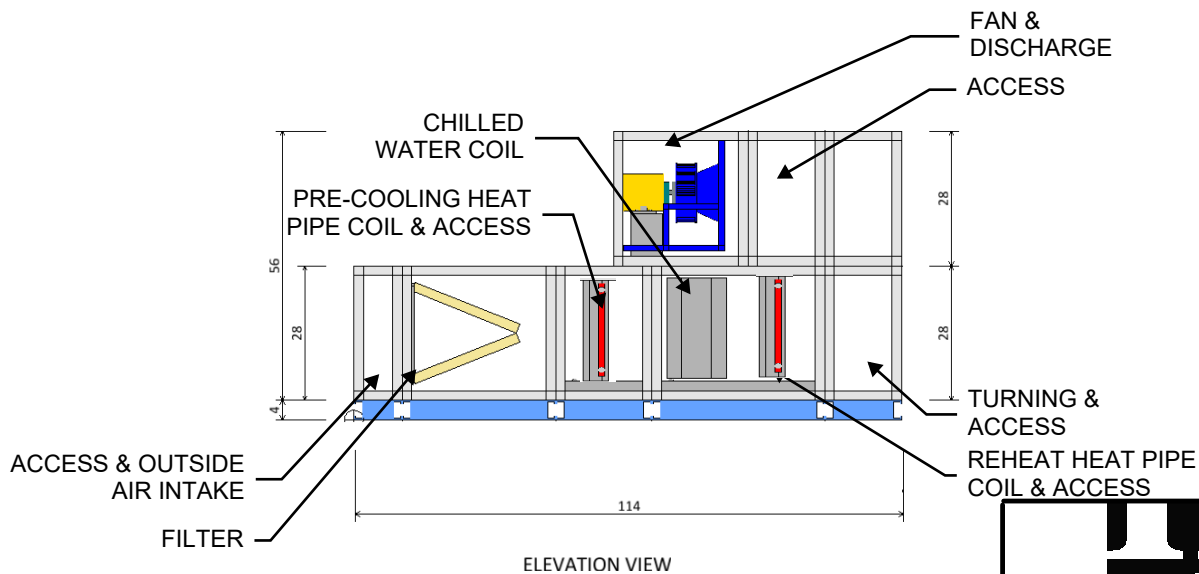
TOP DECK PLAN VIEW



BOTTOM DECK PLAN VIEW



ISOMETRIC VIEW



ELEVATION VIEW

ADDED SHEET IN ITS ENTIRETY

## REVISIONS:

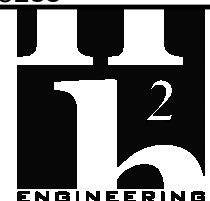
1 1/11/2019 ADDENDUM #1

**PROJECT:**  
SBAC GAINESVILLE HIGH SCHOOL  
BUILDING 27 HVAC RENOVATION

**DESCRIPTION:**  
EARLY RELEASE PACKAGE #2:  
HYDRONIC EQUIPMENT



**DATE:** 12-12-2018  
**SBAC #:** H1710  
**PAGE:** 4 OF 11



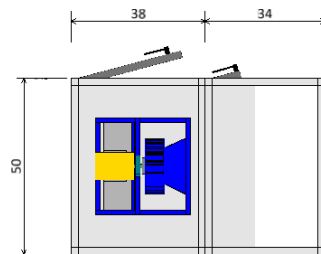
114 EAST 5th AVENUE  
TALLAHASSEE, FL 32303  
PHONE 850.224.7922  
www.H2Engineering.com

H2E PROJECT No. **1871**

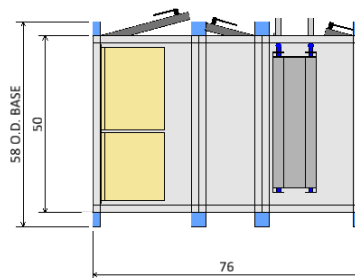
THIS DOCUMENT IS THE PROPERTY OF H2Engineering AND IS PREPARED AS AN INSTRUMENT OF SERVICE. ITS USE, REUSE OR REPRODUCTION, EXCEPT BY WRITTEN AGREEMENT WITH H2ENGINEERING, INC., IS PROHIBITED.

Florida Certificate of Authorization #2485

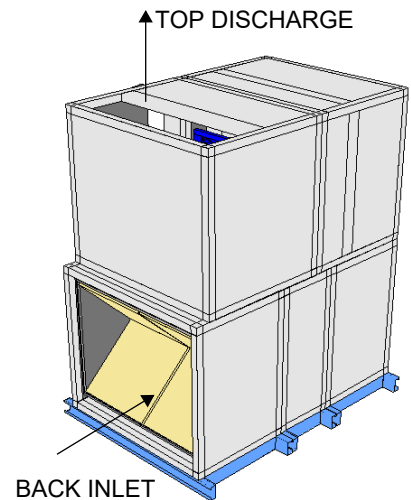
# AHU-1N



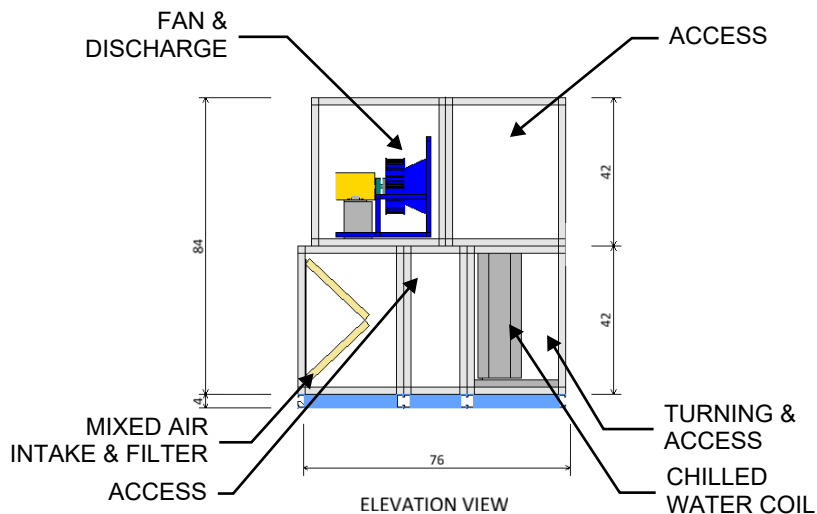
TOP DECK PLAN VIEW



BOTTOM DECK PLAN VIEW



ISOMETRIC VIEW



ELEVATION VIEW

ADDED SHEET IN ITS ENTIRETY

## REVISIONS:

1 1/11/2019 ADDENDUM #1

**PROJECT:**  
SBAC GAINESVILLE HIGH SCHOOL  
BUILDING 27 HVAC RENOVATION

**DESCRIPTION:**  
EARLY RELEASE PACKAGE #2:  
HYDRONIC EQUIPMENT



**DATE:** 12-12-2018  
**SBAC #:** H1710  
**PAGE:** 6 OF 11



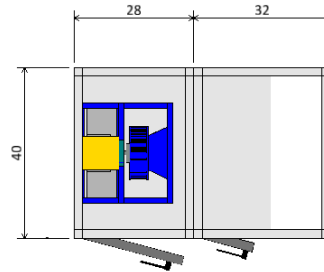
114 EAST 5th AVENUE  
TALLAHASSEE, FL 32303  
PHONE 850.224.7922  
www.H2Engineering.com

H2E PROJECT No. **1871**

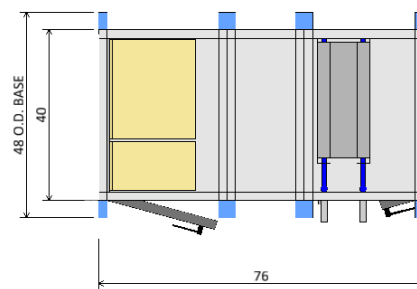
THIS DOCUMENT IS THE PROPERTY OF H2Engineering AND IS PREPARED AS AN INSTRUMENT OF SERVICE. ITS USE, REUSE OR REPRODUCTION, EXCEPT BY WRITTEN AGREEMENT WITH H2ENGINEERING, INC., IS PROHIBITED.

Florida Certificate of Authorization #2485

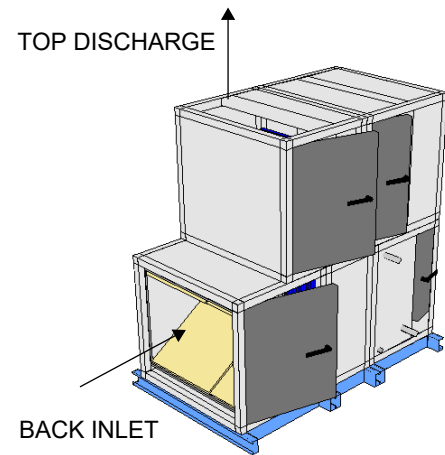
# AHU-1W



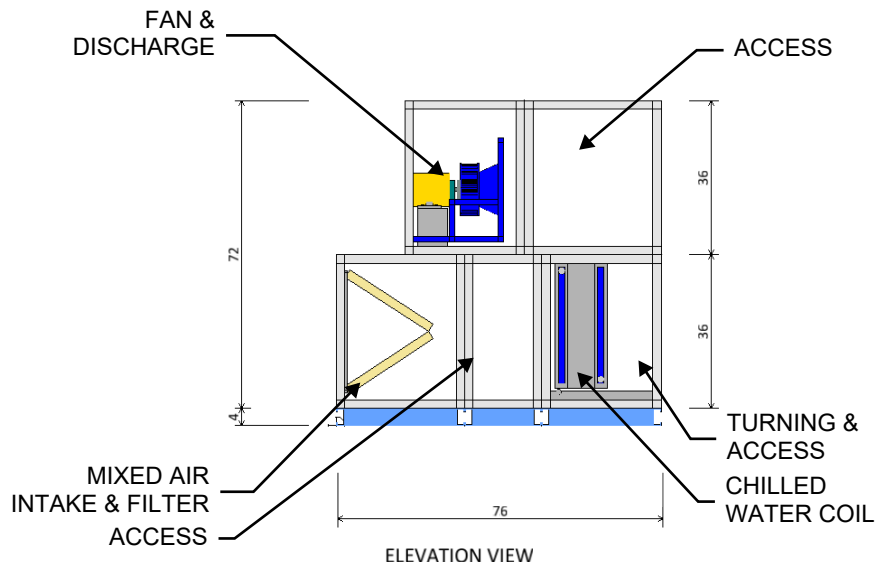
TOP DECK PLAN VIEW



BOTTOM DECK PLAN VIEW



ISOMETRIC VIEW



ELEVATION VIEW

ADDED SHEET IN ITS ENTIRETY

## REVISIONS:

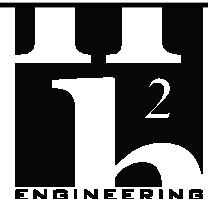
1 1/11/2019 ADDENDUM #1

**PROJECT:**  
SBAC GAINESVILLE HIGH SCHOOL  
BUILDING 27 HVAC RENOVATION

**DESCRIPTION:**  
EARLY RELEASE PACKAGE #2:  
HYDRONIC EQUIPMENT



**DATE:** 12-12-2018  
**SBAC #:** H1710  
**PAGE:** 7 OF 11



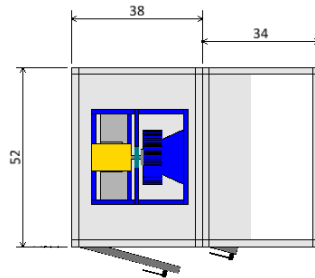
114 EAST 5th AVENUE  
TALLAHASSEE, FL 32303  
PHONE 850.224.7922  
www.H2Engineering.com

H2E PROJECT No. **1871**

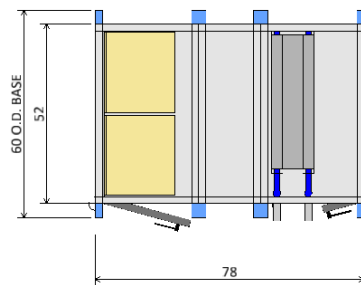
THIS DOCUMENT IS THE PROPERTY OF H2Engineering AND IS PREPARED AS AN INSTRUMENT OF SERVICE. ITS USE, REUSE OR REPRODUCTION, EXCEPT BY WRITTEN AGREEMENT WITH H2ENGINEERING, INC., IS PROHIBITED.

Florida Certificate of Authorization #2485

# AHU-2W

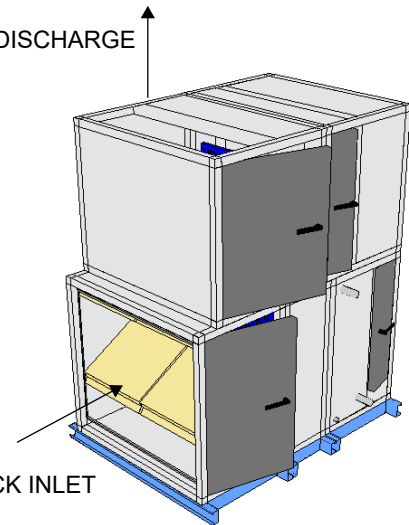


TOP DECK PLAN VIEW



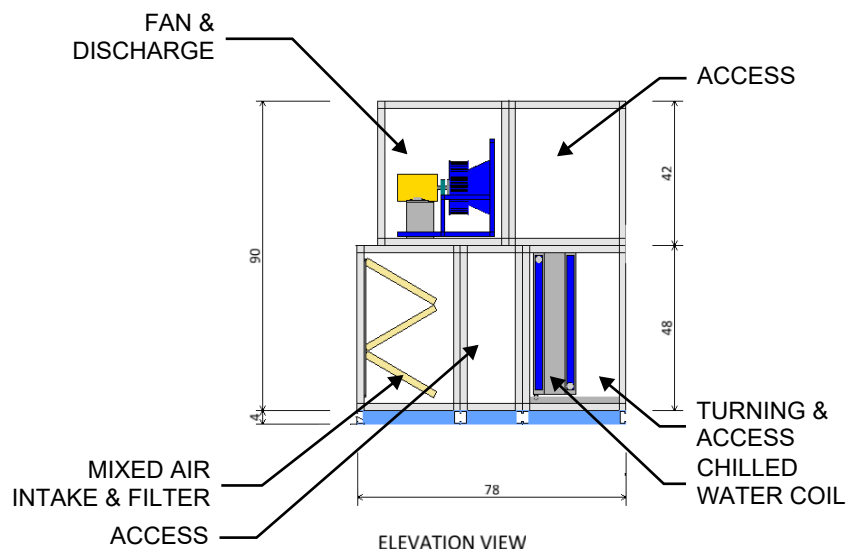
BOTTOM DECK PLAN VIEW

TOP DISCHARGE



BACK INLET

ISOMETRIC VIEW



ELEVATION VIEW

ADDED SHEET IN ITS ENTIRETY

## REVISIONS:

1/11/2019 ADDENDUM #1

**PROJECT:**  
SBAC GAINESVILLE HIGH SCHOOL  
BUILDING 27 HVAC RENOVATION

**DESCRIPTION:**  
EARLY RELEASE PACKAGE #2:  
HYDRONIC EQUIPMENT



**DATE:** 12-12-2018  
**SBAC #:** H1710  
**PAGE:** 8 OF 11



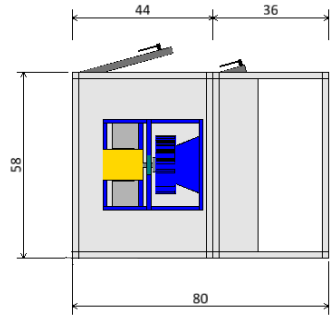
114 EAST 5th AVENUE  
TALLAHASSEE, FL 32303  
PHONE 850.224.7922  
www.H2Engineering.com

H2E PROJECT No. **1871**

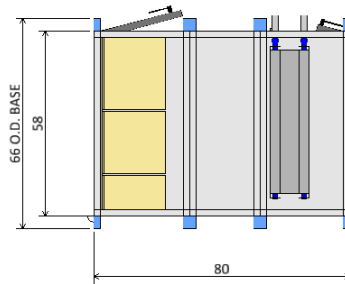
THIS DOCUMENT IS THE PROPERTY OF H2Engineering AND IS PREPARED AS AN INSTRUMENT OF SERVICE. ITS USE, REUSE OR REPRODUCTION, EXCEPT BY WRITTEN AGREEMENT WITH H2ENGINEERING, INC., IS PROHIBITED.

Florida Certificate of Authorization #2485

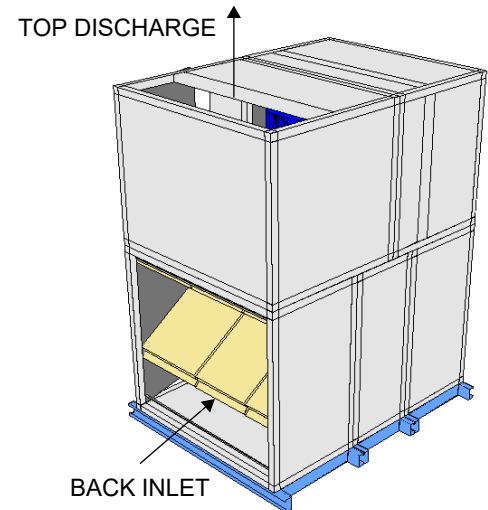
# AHU-2N



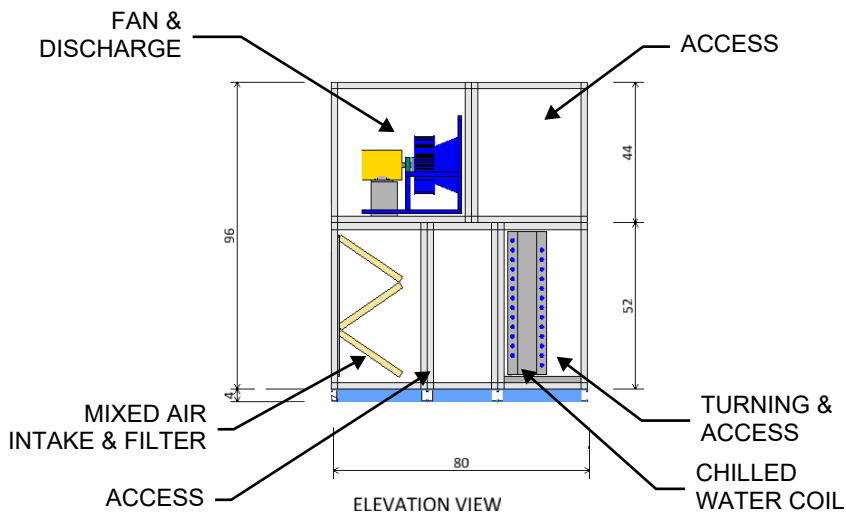
TOP DECK PLAN VIEW



BOTTOM DECK PLAN VIEW



ISOMETRIC VIEW



ELEVATION VIEW

## REVISIONS:

1/11/2019 ADDENDUM #1

ADDED SHEET IN ITS ENTIRETY

**PROJECT:**  
SBAC GAINESVILLE HIGH SCHOOL  
BUILDING 27 HVAC RENOVATION

**DESCRIPTION:**  
EARLY RELEASE PACKAGE #2:  
HYDRONIC EQUIPMENT



**DATE:** 12-12-2018  
**SBAC #:** H1710  
**PAGE:** 9 OF 11



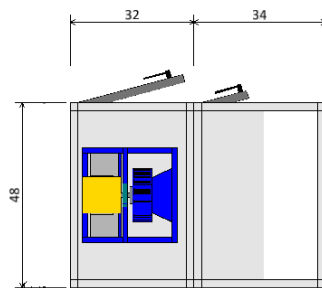
114 EAST 5th AVENUE  
TALLAHASSEE, FL 32303  
PHONE 850.224.7922  
www.H2Engineering.com

H2E PROJECT No. **1871**

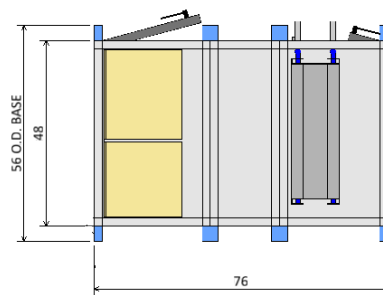
THIS DOCUMENT IS THE PROPERTY OF  
H2Engineering AND IS PREPARED AS AN  
INSTRUMENT OF SERVICE. ITS USE, REUSE  
OR REPRODUCTION, EXCEPT BY WRITTEN  
AGREEMENT WITH H2ENGINEERING, INC., IS  
PROHIBITED.

Florida Certificate of Authorization #2485

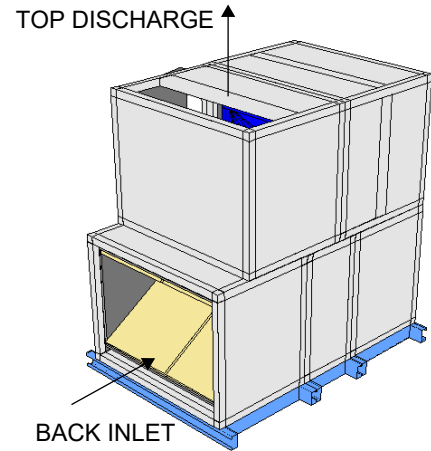
# AHU-5W



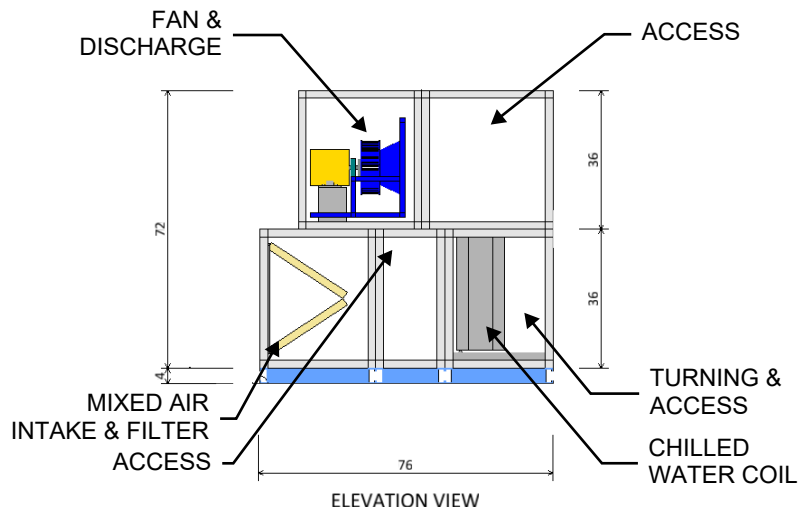
TOP DECK PLAN VIEW



BOTTOM DECK PLAN VIEW



ISOMETRIC VIEW



ELEVATION VIEW

ADDED SHEET IN ITS ENTIRETY

## REVISIONS:

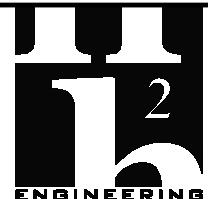
1/11/2019 ADDENDUM #1

**PROJECT:**  
SBAC GAINESVILLE HIGH SCHOOL  
BUILDING 27 HVAC RENOVATION

**DESCRIPTION:**  
EARLY RELEASE PACKAGE #2:  
HYDRONIC EQUIPMENT



**DATE:** 12-12-2018  
**SBAC #:** H1710  
**PAGE:** 10 OF 11



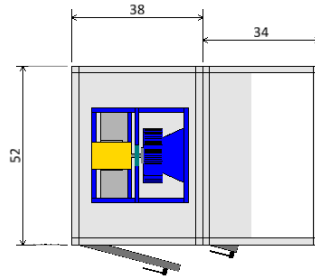
114 EAST 5th AVENUE  
TALLAHASSEE, FL 32303  
PHONE 850.224.7922  
www.H2Engineering.com

H2E PROJECT No. **1871**

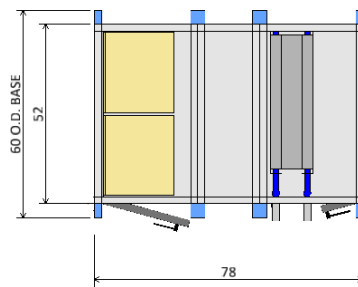
THIS DOCUMENT IS THE PROPERTY OF  
H2Engineering AND IS PREPARED AS AN  
INSTRUMENT OF SERVICE. ITS USE, REUSE  
OR REPRODUCTION, EXCEPT BY WRITTEN  
AGREEMENT WITH H2ENGINEERING, INC., IS  
PROHIBITED.

Florida Certificate of Authorization #2485

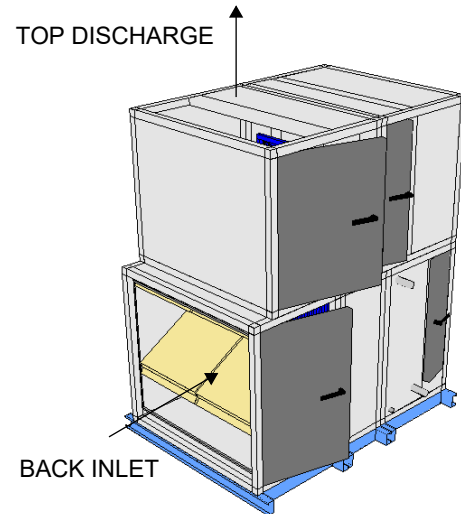
# AHU-6W



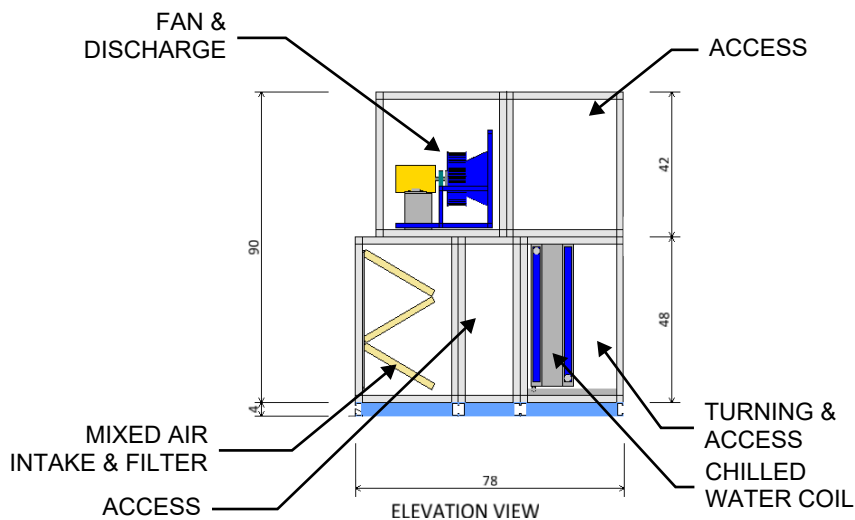
TOP DECK PLAN VIEW



BOTTOM DECK PLAN VIEW



ISOMETRIC VIEW



ELEVATION VIEW

ADDED SHEET IN ITS ENTIRETY

## REVISIONS:

1/11/2019 ADDENDUM #1

**PROJECT:**  
SBAC GAINESVILLE HIGH SCHOOL  
BUILDING 27 HVAC RENOVATION

**DESCRIPTION:**  
EARLY RELEASE PACKAGE #2:  
HYDRONIC EQUIPMENT



**DATE:** 12-12-2018  
**SBAC #:** H1710  
**PAGE:** 11 OF 11



114 EAST 5th AVENUE  
TALLAHASSEE, FL 32303  
PHONE 850.224.7922  
www.H2Engineering.com

H2E PROJECT No. **1871**

THIS DOCUMENT IS THE PROPERTY OF  
H2Engineering AND IS PREPARED AS AN  
INSTRUMENT OF SERVICE. ITS USE, REUSE  
OR REPRODUCTION, EXCEPT BY WRITTEN  
AGREEMENT WITH H2ENGINEERING, INC., IS  
PROHIBITED.

Florida Certificate of Authorization #2485